



Bold colorblocking on the chest, sleeves and back yoke give this moisture-wicking polo instant appeal whether you're going 18 or going into the office.

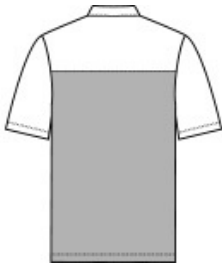
- 4.3-ounce, 57/43 cotton/poly pique
- Moisture-wicking
- Self-fabric anti-curl collar with collar stand
- Forward shoulder
- 3-button placket
- Dyed-to-match buttons (Dark Smoke buttons on Deep Black/Charcoal Heather)
- Straight hem
- Tag-free label

CARE INSTRUCTIONS

Machine Wash Cold With Like Colors. Do Not Use Fabric Softener. Do Not Bleach. Tumble Dry Low. Warm Iron If Necessary.



front



back

HOW TO MEASURE



CHEST WIDTH
Measure under the arm and around the fullest part of the chest with arms down, keeping tape horizontal.

SIZE CHART

	XS	S	M	L	XL	2XL	3XL	4XL
Chest	32-34	35-37	38-40	41-43	44-46	47-49	50-53	54-57

COLOR INFORMATION

Please note: PMS code information is shown only when an exact match is available.



Aegean Blue/
Aegean Blue
Heather
PMS 4154C



Deep Black/
Charcoal Heather
PMS BLACK C



River Blue Navy/
River Blue Navy
Heather
PMS 4280C