



DISCONTINUED Sport-Tek® 5-in-1 Performance Straight Leg Warm-Up Pant. P712



Choose functionality w ith our coordinating jackets and pants that offer 5-in-1 performance: repel odor, resist static, repel w ater, repel oil and resist stains. With relaxed athletic styling and w hisper-quiet w ear—these pants are a workout essential.

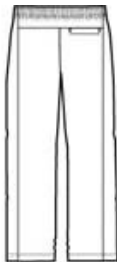
- 100% polyester outer shell
- Full mesh lining w ith nylon at cuffs for easy on/off
- Elastic w aistband w ith draw cord
- Tw o front pockets, one back pocket
- Extended leg zippers
- Mesh lining above knees, nylon lining below for easy on/off

CARE INSTRUCTIONS

Machine w ash w ith like colors. Do not bleach. Tumble dry low .
Warm iron if necessary. Do not use fabric softeners.

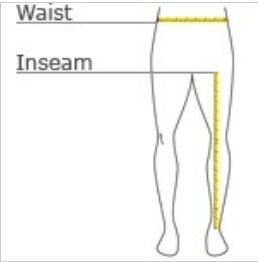


front



back

HOW TO MEASURE



WAIST
Measure around the smallest part of the natural waist.

INSEAM
Measure a similar style pant that fits w ell and is the desired length. Measure from the crotch seam to the hem.

SIZE CHART

	L
Waist	35-37
Inseam	32

COLOR INFORMATION

Please note: PMS code information is shown only when an exact match is available.